

## 824 OneTouch-4e XYZ-R Machine Specifications and Dimensions:

Force Range	Adjustable 1000 lbs. (4.46k) to 16000 lbs. (72kN) - Optional 20000 lbs. (90kN) modification available
Throat Depth	24" (610mm)
Stroke Length	adjustable 0 to 8.5" (0 to 220mm)
Electrical	208 to 575V 3 phase - 50 or 60 Hz
Motor	5 HP
Oil Tank Reservoir	22 gallons (83 liters)
Speed	up to 1400 insertions per hour
Repeatability	+/- 2% of force setting
Footprint	(LxWxH) 4900mm x 4500mm x 2388mm (16ft x 14ft x 7.8ft)
Fastener Range	256 to 3/8" (M2 to M10)
Workpiece Range	24" x 48" (600mm x 1200mm)
Workpiece Weight	30 lbs (13.5 kg)

For more information on the 824 OneTouch-4e XYZ-R and other Haeger products, visit our website at [www.haeger.com](http://www.haeger.com) or contact your authorized Haeger distributor.

Always the most cost effective solution  
for your fastener insertion challenge!



## 4 Axis Fully Robotic System: Combining the Highest Productivity with Total Process Control...

# 824

### OneTouch 4<sup>e</sup> XYZ-R

### Fastener Insertion System



**Haeger USA**  
Manufacturing Headquarters  
811 Wakefield Drive  
Oakdale, CA 842511  
United States  
T +1 209 848 4000

**Haeger Europe**  
Textielstraat 18b  
7575 CA Oldenzaal  
The Netherlands  
T +31 541 530 230

**Haeger Asia**  
99 Middle Chenfeng Road  
Kunshan  
Jiangsu Province, China  
215300  
T +86 512 5726 9300

Website: [www.haeger.com](http://www.haeger.com)

[www.pemnet.com](http://www.pemnet.com)

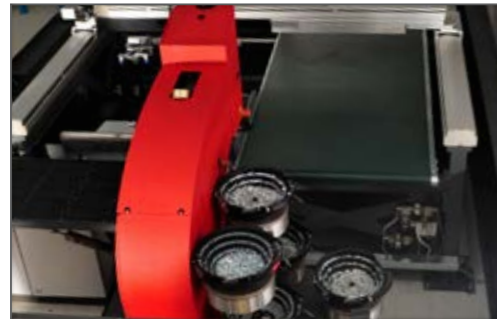
E-mail: [info@haeger.com](mailto:info@haeger.com)



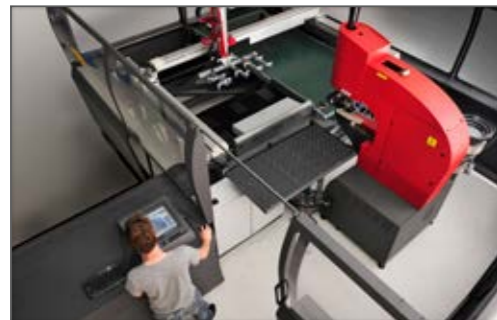
**Haeger**  
a PennEngineering® Company

**Haeger**  
a PennEngineering® Company

**A** Up to 6 MAS-350 Modular Autofeed Systems can be installed



**B** Programming of the next workpiece during a production run



## Creating Hardware Insertion Profit Centers

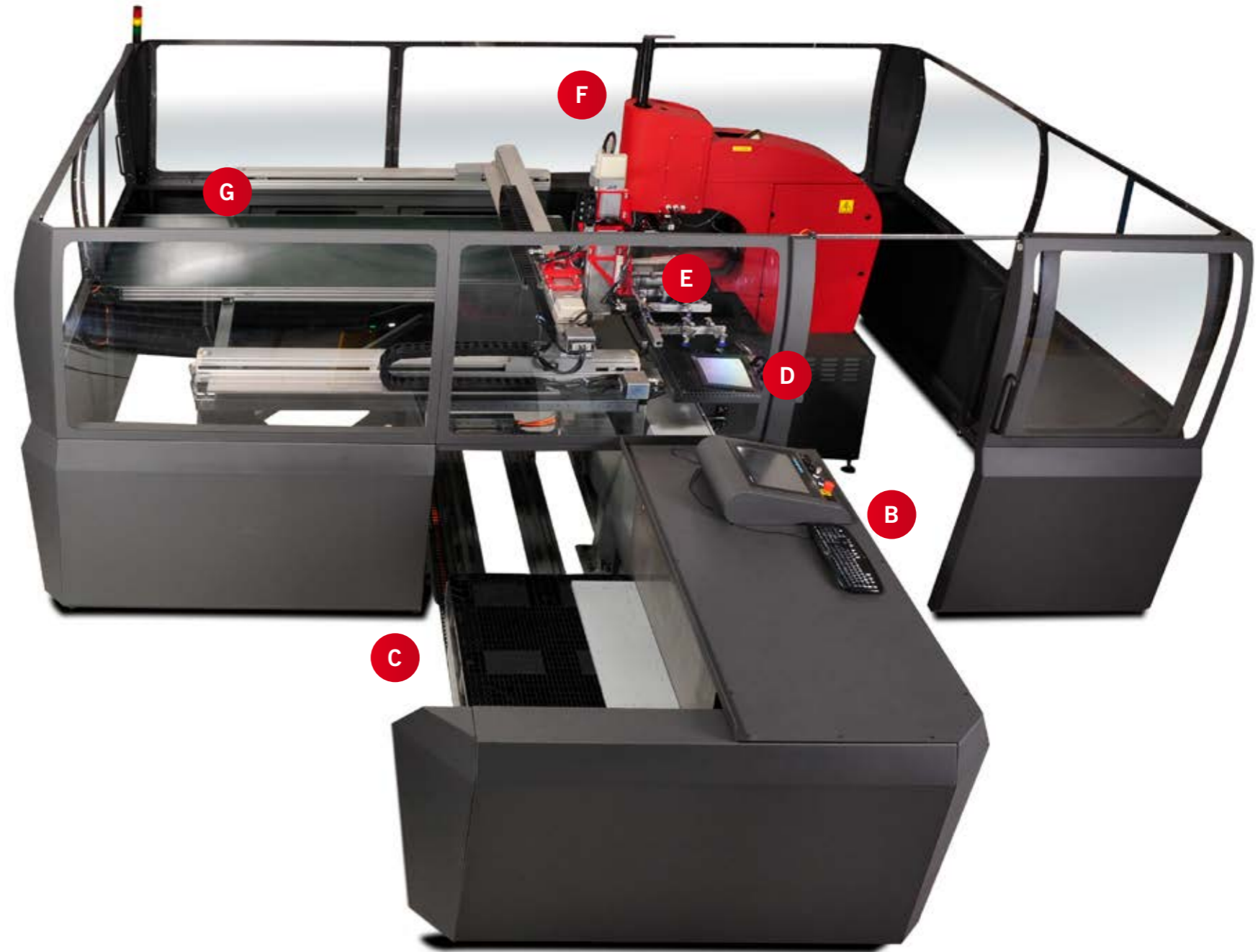
The new 824 OneTouch-4e XYZ-R offers:

1. Zero errors in your hardware insertion process
2. Easy setup and programming in less than 15 minutes per new setup
3. Insertion into sheets up to 24" x 48" (600mm x 1200mm) from 2 sides
4. Unmanned production time of up to 8 hours depending on workpiece sizes

All the advantages of the Haeger 824OneTouch-4e machine combined with an easy to program and easy to set up Robotic Sheet Handling System.

The 824 OneTouch-4e XYZ-R is ideal for:

- Flat, single, large workpieces with fasteners required in both sides of the workpiece.
- Multiple, flat workpiece with a variety of up to 6 different fasteners
- Cell environment setup to work simultaneously with 1 operator in combination with a manual insertion machine or press brake



**C** Automatic loading of a pallet of workpieces.



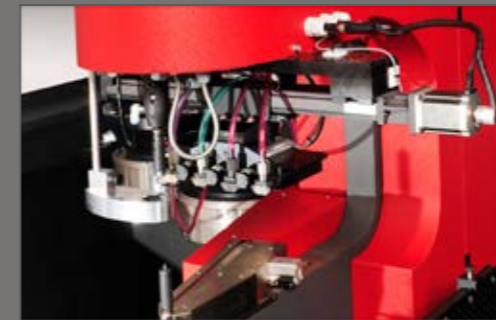
**D** Inserting up to 6 different pieces of hardware in 1 single pass in both sides of the workpiece.



**E** Alignment of the work piece on the Auto-Load table.



**F** Fastener Removal System will detect and automatically remove the wrong length studs or standoffs.



**G** Stacking parts on the transport belt.

