

Haeger 824™ MSP 5e

The 824™ MSP 5e features:

- 8 ton (72kN) ram force and 24 inch (610mm) throat depth with adjustable ram retract position.
- Reliability/energy efficiency of a fully hydraulic machine.
- Haeger's patented safety system.
- Tooling Protection System and Batch Counter.

Positive Stop System

The Positive Stop System provides an easily adjustable method of precisely maintaining the stopping point of the machine cylinder. The system is particularly well suited for improving uniformity on soft, delicate work pieces. It is also effective when inserting small hardware. In addition to aluminum, the system also provides excellent insertion results on a wide variety of softer materials such as fiberglass, printed circuit boards, and many plastic or composite materials.

MAS 350 Modular Autofeed System (Optional)

The Modular Autofeed System can feed nuts, studs and standoffs in the size M2 till M10. The maximum length of the studs and standoffs is 30mm.



Modular Autofeed System.

Built-in TPS Controls

The Tooling Protection System (TPS) is designed to protect both the tooling and the workpiece from damage.

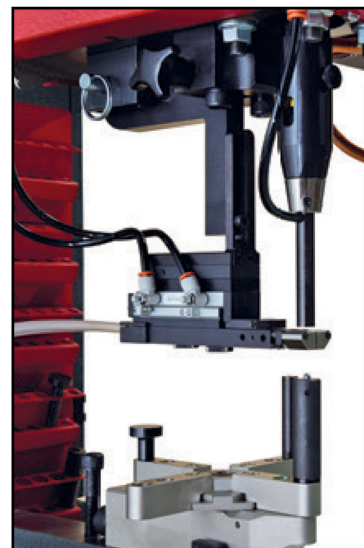
Tooling rack

Quick and easy access to tooling.

Turret Insertion System (Optional)

Install up to 4 different fasteners in 1 Single Part Handling (Option includes required Software for Single Part Handling Programming).

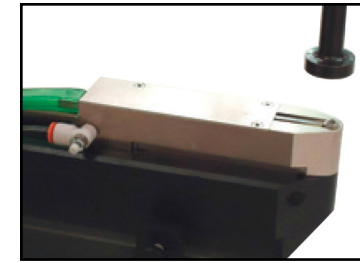
ROBOT COMMUNICATION AVAILABLE



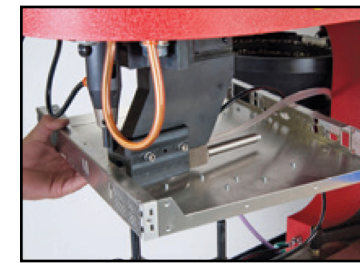
Multi-shuttle tooling platform for nuts studs and standoffs.

Multi-Shuttle Tooling Platform for Nuts, Studs and Standoffs.

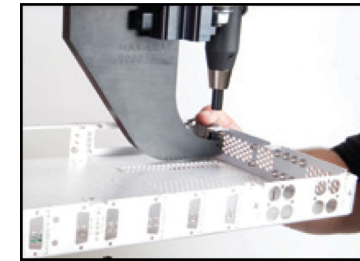
The Multi-Shuttle Platform provides a universal quick and easy tool change over between nuts, studs and standoffs – enabling 2-minute total tool changes without realignment. Changeover between Manual and Automatic Tooling setup is faster and easier.



Automatic Bottom Feed Tooling (ABFT) for inserting nuts into at parts as well as into hard-to-reach holes. Such as those on the underside of a flange.



Automatic Bottom Feed J-Frame is used for those difficult to reach flanges.

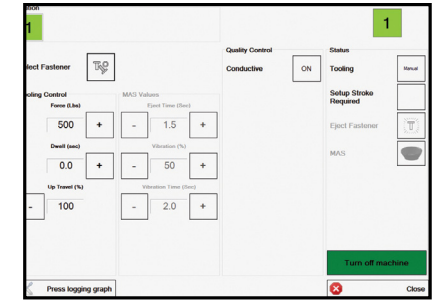


Manual tooling J-Frame is used for small boxes and short reverse flanges.

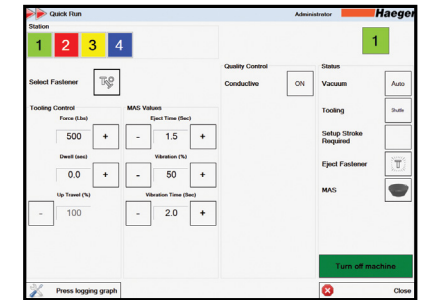
Specifications

Force Range	Adjustable 800 lbs. (3.6 kN) to 16,000 lbs. (72 kN) Optional 20,000 lbs. (90 kN) modification available
Throat Depth	24" (610 mm)
Stroke Length	Adjustable 0 to 8.5" (0 to 220 mm)
Electrical	208 to 575 V 3 phase - 50 or 60 Hz
Motor	5 HP 3 Phase Low 16 A 208-240 V / High 9.6 A 380-480 V
Oil Tank Reservoir	22 gallons (83 liters)
Speed	up to 1,400 insertions per hour
Repeatability	+/- 2% of force setting
Weight	2,800 lbs. (1,270 kg)
Footprint	60"L x 38"W x 97"H (1473 mm x 965 mm x 2463 mm)
Fastener Range	.256 to 1/2" (M2 to M12)

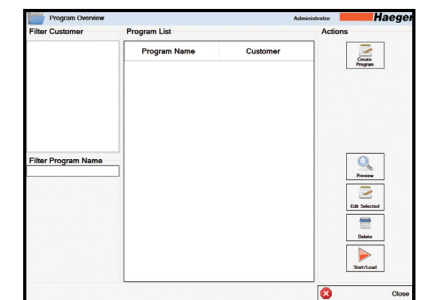
For more information on the 824™ MSPe and other Haeger® products, visit our website at www.haeger.com or contact your authorized Haeger® distributor.



Single Station settings: Operators can set the Force, Dwell and Up Travel from this single station screen.



Multi-Station: Multi-Station is an option that allows the operator to insert more than one fastener in a program. Each station can be configured to have its own individual Force, Dwell Time and Up Travel.



Programs: Up to 10,000 programs can be stored and loaded.