



# Haeger® 618™ MSP 5e™

## Features:

- 6 ton (53kN) ram force and 18 inch (450mm) throat depth with adjustable ram retract position.
- Reliability/energy efficiency of a fully hydraulic machine.
- Haeger's patented safety system.
- Tooling Protection System and Batch Counter.

## Positive Stop System (Optional)

The Positive Stop System provides an easily adjustable method of precisely maintaining the stopping point of the machine cylinder. The system is particularly well suited for improving uniformity on soft, delicate work pieces. It is also effective when inserting small hardware. In addition to aluminum, the system also provides excellent insertion results on a wide variety of softer materials such as fiberglass, printed circuit boards, and many plastic or composite materials.



Modular  
Autofeed  
System.



## MAS 9 or MAS 350 Modular Autofeed System (Optional)

Customer has the choice to pick either feed system based on which type of auto tooling they want. The maximum stud and standoff lengths are up to 30mm.

## Built-in TPS Controls

The Tooling Protection System (TPS) is designed to protect both the tooling and the workpiece from damage.

## Tooling rack

Quick and easy access to tooling.

## Multi-Shuttle Tooling Platform for Nuts, Studs and Standoffs.

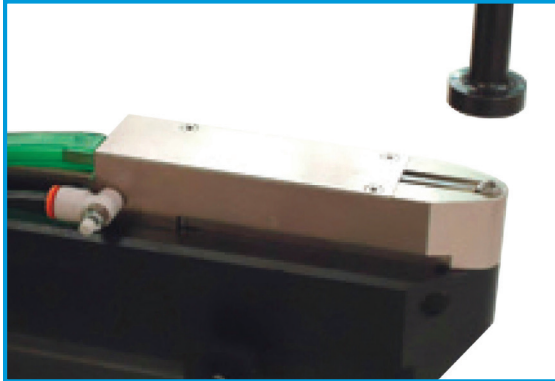
The Multi-Shuttle Platform provides a universal quick and easy tool change over between nuts, studs and standoffs – enabling 2-minute total tool changes without realignment. Changeover between Manual and Automatic Tooling setup is faster and easier.



Multi-shuttle tooling platform  
for nuts studs and standoffs.

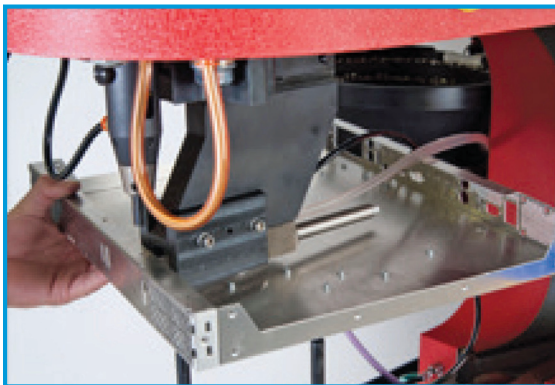
**ROBOT COMMUNICATION AVAILABLE**

# Haeger® 618™ MSP 5e™

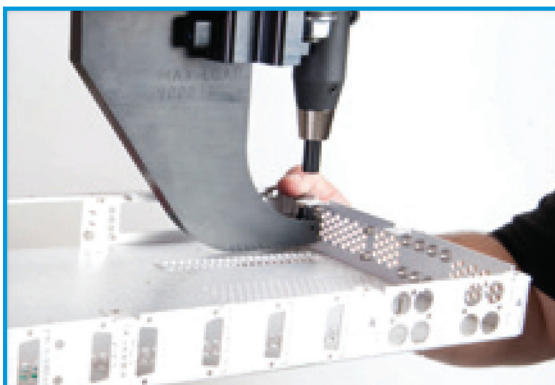


## Automatic Bottom

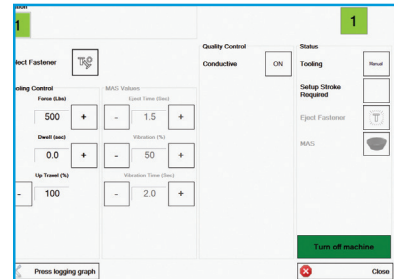
Feed Tooling (ABFT) for inserting nuts into at parts as well as into hard-to-reach holes. Such as those on the underside of a flange.



Automatic Bottom Feed J-Frame is used for those difficult to reach flanges.

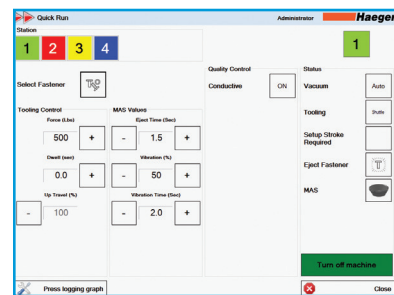


Manual tooling J-Frame is used for small boxes and short reverse flanges.

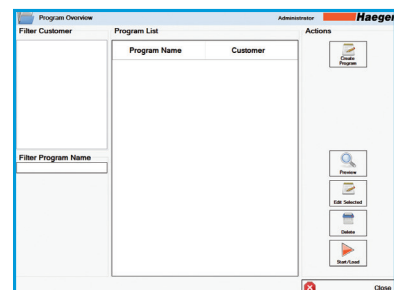


## Single Station settings:

Operators can set the Force, Dwell and Up Travel from this single station screen.



**Multi-Station:** Multi-Station is an option that allows the operator to insert more than one fastener in a program. Each station can be configured to have its own individual Force, Dwell Time and Up Travel.



## Programs:

Up to 10,000 programs can be stored and loaded.



# Haeger® 618™ MSP 5e™

## Specifications

Fastener Range	#2-56 to 5/16" (M2 to M8)
Force Range	Adjustable 600 lbs to 12,000 lbs (2.6-53 kN)
Drive System Type	Hydraulic
Insertions per Hour	Up to 1,400
Control System	Insertion Logic
Auto-Feed	Optional
Batch Counter	Standard
Fastener Database	Standard
Insertion Graphics	No
Fastener Length Detection	No
Positive Stop	N/A
Screen Size	10"
Robot Ready	Optional
Remote Connection	Standard
Repeatability	+/- 2%
Throat Depth	18" (450 mm)
Stroke Length	0 to 8.0" (0 to 200 mm)
Up Travel %	10-100%
Electrical Requirements	3 Phase Low 9 A 208-240 V or High 3.7 A 380-480 V
Air Requirements	90 to 100 PSI (6 to 7 BAR) 1/2" (12mm) dia. minimum line flow
Oil Reservoir Capacity	10 gallons (39 liters)
Weight	1,600 lbs (726 kg)
Footprint	45"L x 34"W x 84"H (1092 mm x 864 mm x 2134 mm)

For more information on the 618™ MSPe and other Haeger® products, visit our website at [www.haeger.com](http://www.haeger.com) or contact your authorized Haeger® distributor.